
US GLOBAL RESOURCES

OVER 80 YEARS OF SERVICE TO A GROWING WORLD

Industrial Pressure Washers



Working Well Under Pressure



www.usgr.com

+1 (888) 334-1440

Working Well Under Pressure

"Working Well Under Pressure"

We are committed to your satisfaction. Every day since 1971 our people have been building pressure washers and sewer jetting equipment that work as hard as you do. Hand crafted equipment, built in the USA, made from carefully selected components and engineered to meet your demands!



Cold Water Pressure Washers

- Electric Powered
- Gas Powered
- Diesel Powered
- Hydraulic



Hot Water Pressure Washers

- Electric Powered
- Diesel Powered
- Gas Powered
- Natural Gas, LP, and Diesel Fired



Custom Pressure Washers

- Hot or Cold
- Electric Powered
- Gas Powered
- Diesel Powered

We supply high powered, high performance pressure washers and drain jetters for all industries and applications. Stocking over 80 models and another 150 models that are a few days out, our philosophy is meeting and exceeding the customer's needs. We understand you depend on your equipment to get work done efficiently and right. We are with you every step of the way. The tag line "Working Well Under Pressure" is our commitment to the things that matter most, proven quality equipment, truth in specifications, relationships with customers and employee's. We look forward to a long, performance based relationship with you!



HOT Water PRESSURE WASHERS

Working Well Under Pressure

Our Hot Water pressure washers are designed for tough jobs where the hot water will clean fast, saving you time and money. All of our Hot Water pressure washers are made in the US, using the highest quality steel available, the coil assemblies are covered by a lifetime warranty against manufacturer's defects. Hot water will cut through grease and grime quickly with water temperatures up to 200 degrees. Powered by gas, diesel, or electricity, and heated using diesel, natural gas, or LP. Operating pressure ranging up to 7000PSI, let us help get the job done!



DIESEL

- 4 Wheel Cart
- Skid
- Trailer



GAS

- 4 Wheel Cart
- Skid
- Trailer



ELECTRIC

- 2 Wheel Cart
- 4 Wheel Cart
- Skid
- Trailer

POWERED BY	PSI RANGE	GPM RANGE	CC/ HORSEPOWER/ MOTOR/ PHASE	BURNER FUEL	STYLES
Electric	1000-4000	2-8	1.5hp-20hp/120v-480v, 15amp-40amp, 1ph-3ph	Diesel, Natural Gas, Liquid Propane	Cart, Skid Trailer
Gas	2000-7000	3-5.5	5.5 HP - 35 HP	Diesel	Cart, Skid Trailer
Diesel	2000-4000	3-5.5	6.5 HP - 20 HP	Diesel	Cart, Skid Trailer





COLD Water PRESSURE WASHERS

Working Well Under Pressure

Our cold water pressure washers are designed for most cleaning applications. Models offer innovative design features based on customer feedback to make every cleaning job easier and efficient. Powered by gas or diesel engines, electric or hydraulic motors, and with pressures up to 7000PSI, you can trust that our cold water pressure washers will “work well under pressure” for you.



ELECTRIC

- Hand Carry
- Wall Mount
- Cart
- Base Mount



GAS

- 2 Wheel Cart
- 4 Wheel Cart
- Skid
- Trailer



DIESEL

- Cart
- Skid
- Trailer



HYDRAULIC

- Base Mount
- O.E.M.'s

POWERED BY	PSI RANGE	GPM RANGE	CC /HORSEPOWER / MOTOR /PHASE	STYLE(s)
Electric	1000-5000	2-8	1.5hp-20hp/120v-480v, 15amp-40amp, 1ph-3ph	Wall Mount, Cart, Base, Hand Carry, Trailer
Gas	1600-7000	2.5-15	5.5 HP - 35 HP	Cart, Base, Trailer, Skid
Diesel	2500-5000	3-25	6.5 HP - 74 HP	Cart, Skid, Trailer
Hydraulic	2000-5000	3-5.5	camspray.com for oil requirements (HYD)	Base





CUSTOM PRESSURE WASHERS

Working Well Under Pressure

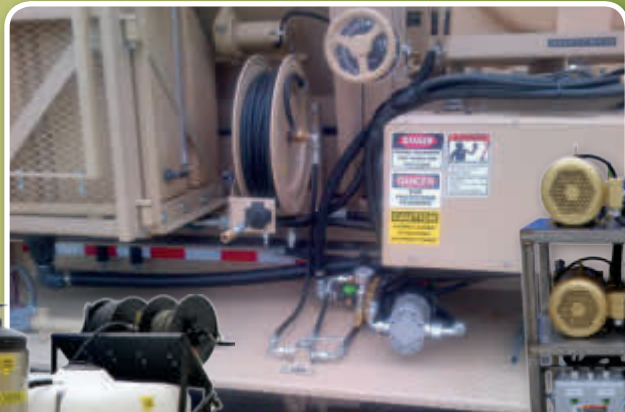
Custom Pressure Washers

Our relationships in the Agriculture, Automotive, Construction, Food Pro-cessing, Gas, Oil, Mining, Military, Government, Janitorial, Plumbing, Pork Production, and Industrial Marketplace allow us to be driven by In-dustry and pushed to offer efficient, dependable, and on time solutions year after year.



Our in house capabilities and capacities, along with the innovation and motivation of our American work force, allows us to be your partner in business no matter the project. We are here for you, to work well under pressure!

Let us explore with you the types of custom work we can do to help find a solution to build your “dream machine”. Our custom built pressure washers are a necessity for many of our business partners; custom machines have been part of our foundation. We have found that there are many applications that the average off the shelf machinery will not handle due to space restrictions, limited access, hazardous locations and many other features that limit your ability to clean. All of these restrictions waste time and money that with minor changes it would be a breeze to clean with the right equipment. With our in house design and metal fabrication capabilities, we are your high pressure partner.



Working Well under Pressure is something we takes seriously!

The end user will always has access to our customer service team. We are ready to get your question answered and get you back to work. The relationships we have built allow us to offer parts and service solutions. We have have in house parts, warranty, and service managers ready to go to work for you! With service partners in all 50 states, we are proven partner you can depend on.



US GLOBAL RESOURCES

OVER 80 YEARS OF SERVICE TO A GROWING WORLD

Industrial Pressure Washers



Working Well Under Pressure