

# VersiSTEP

INTEGRATED CONTROL

*Flexible and powerful, this multi-zone control gives you the ability to divide its 24 outputs any way you'd like between 1 to 8 zones, and you can add 16 additional outputs with the complementary Satellite unit. This is the perfect control for greenhouses with more equipment than will fit on an EnviroSTEP control or for growers with multiple zones.*



## FEATURES

- 1-8 zone control
- 3 setpoint periods—day, night and DIF
- 24 relay outputs with manual override switches
- 16 additional outputs when you order the VersiSTEP Satellite
- Replaceable 10 amp DPDT relays, can operate a wide variety of equipment — these relays reduce the cost of your contactor panel
- 4 analog outputs (0 to 10VDC) to control variable-speed fans and modulating valves
- 32 analog input channels for connecting light, CO<sub>2</sub>, RH and temperature sensors
- 8 digital detector channels sense precipitation, wind speed and direction
- Ramping allows for gentle transition between set point periods and saves fuel
- Records the status of all inputs and outputs in 15-minute increments
- Alarm outputs: temperature, RH and power failure
- Large display includes menu-driven choices and graphic functions
- Keypad for easy operation
- Durable corrosion-resistant cabinet with locking door protects your control
- Cabinet size: 32" x 24" x 5"

## REQUIRES

- Solar-guarded aspirated temperature and humidity sensor and 100' of cable

*After 25 years of working with a DOS program we finally went to the Wadsworth system, and it was amazing. A young researcher here drove us to get controls that meet his needs. I receive requests from researchers, and I change the VersiSTEP control settings to accommodate their work. Everyone at Wadsworth has been nothing but professional.*

**TIM MULLIGAN**  
Uplands Farm Manager  
Cold Spring Harbor Laboratory

**To find out more** 888-334 or email: [usgr@usgr.com](mailto:usgr@usgr.com)

# US GLOBAL RESOURCES

80 YEARS OF SERVICE TO A GROWING WORLD

# STEPsaver

SOFTWARE

Add the convenience of remote access to your environmental control allowing you to manage your greenhouse and monitor conditions from your Smartphone or computer. STEPsaver provides a single view of all of your greenhouse zones and offers advanced data logging and analysis tools to help you manage your crop.

## STEPsaver as a Productivity Tool

- Multiple Document Interface allows you to view and cross reference information like setpoints, or make comparisons between zones
- Allows for remote consultation and training
- Provides an arena for learning full capabilities of your VersiSTEP or EnviroSTEP
- STEPsaver's powerful tools help you view, interpret and manage greenhouse climate data and settings at the control or remotely
- View conditions for the entire greenhouse range at a glance
- Allows you to see and change the settings for any controller in any zone
- Not limited to a single user/computer. No extra charge or subscription fees for sites with a Local Area Network
- Remote access allow you to monitor and change greenhouse conditions from your Smartphone, tablet or computer
- STEPsaver Imaging provides a comprehensive snapshot of settings so you can replicate previous success

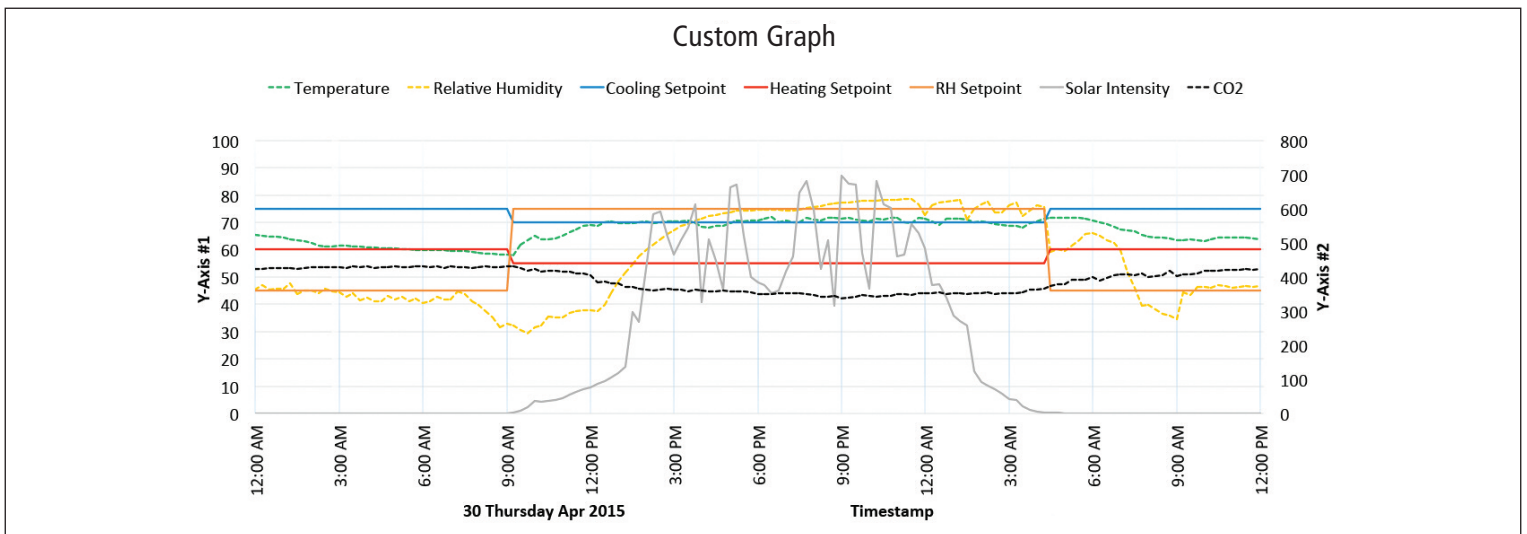
## STEPsaver as an Analysis Tool

- STEPsaver expands the graphing power of your Wadsworth integrated control
- Analyze sensors and equipment usage
- Compare data between zones
- Filter data to pinpoint every entry, or broaden view to a few points that represent hours or an entire day. Spot long-term trends by hiding detail
- Create custom graphs to analyze sensor readings, equipment use and weather
- Download data
- Presentation quality printed reports

## STEPsaver as a Management Tool

- Transfer and store data
- Built-in reporting tools
- Monitor and manage your energy consumption
- Confirm that systems are running as expected
- View the average temperature and humidity for day, night and DIF
- Manage access to settings with user names and passwords

**SYSTEM REQUIREMENTS** • Windows XP (32 bit only), Windows 7 and Windows 8 (32 and 64 bit) • 1 GIG of RAM • 500 MB available hard disk space  
• Compatible with the EnviroSTEP or VersiSTEP controls



To find out more call 888-334-1440 or email: [usgr@usgr.com](mailto:usgr@usgr.com)

**US GLOBAL RESOURCES**

80 YEARS OF SERVICE TO A GROWING WORLD