



SUNSTOPPER

Retailers and growers alike will benefit from the sun and wind protection provided by the Sunstopper. It's a wonderful example of how strength and convenience come together to provide you with added value. By utilizing 2½" O.D. 12 gauge galvanized steel (when others use just 1.66"), and by attaching shade panels with 10" bungee balls, you are assured of both stability and quick assembly. While standard sizes offer an economical option, we're happy to help you customize the Sunstopper for your individual layout needs.



SPECIFICATIONS

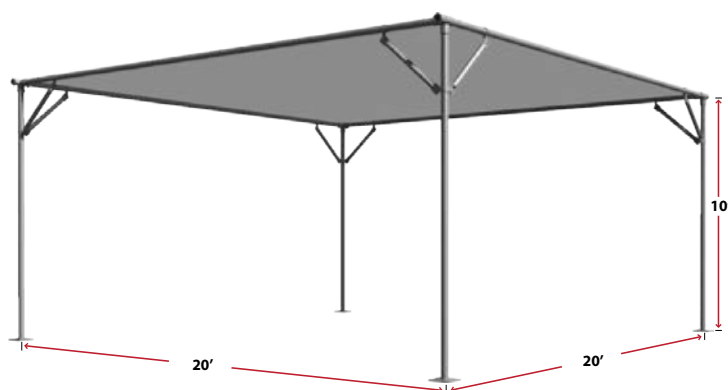
Width/Lengths: 20' x 20' blocks (custom sizes available)

Anchors: ground stands or optional base plates with concrete anchor bolts

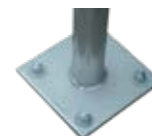
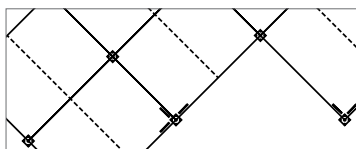
Vertical posts: 2½" O.D. 12 ga. x 10' galvanized steel

Horizontal supports: 2½" O.D. 12 ga. x 20' galvanized steel

Cover: 30–90% shade cloth



OPTIONS



Layout Assistance: We can design a shade structure that accommodates your specific location needs

Base Plate with Concrete Anchor Bolts: Firmly secure your structure

51% LARGER TUBING!

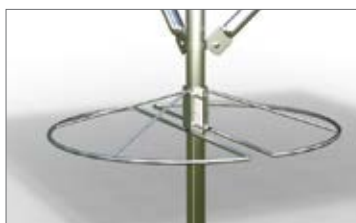
The Sunstopper is built to last with tough 2½" O.D. 12 gauge galvanized steel tubing. That's 51% LARGER than what most manufacturers use. Get a better product for your investment with the Sunstopper.

SUNSTOPPER
2 ½"

Others
1.66"

Sunstopper uses larger diameter tubing.

Others use smaller diameter tubing.



Two (2) Post Basket Hangers shown

Post Basket Hanger	
Part #	Price
BH3520 (2 ½" rd. posts)	



Two (2) Post Hanging shelves shown

Post Hanging Shelf	
Part #	Price
BH1023 (2 ½" rd. posts)	

Sunstopper Standard Packages Include:

2 ½" O.D. 12 ga. x 10' vertical posts with ground stakes in 20' x 20' blocks, 2 ½" O.D. 12 ga. x 20' galvanized horizontal members, 60% black knitted shade cloth with taped edges and grommets, 10" canopy ball bungee every 18", fittings, hardware, and assembly instructions.



Call Now for Information and Pricing

Toll-free: 888-334-1440

Email: usgr@usgr.com

SUN-STOPPER SHADE SYSTEM PRICING

20' x 20' blocks		
Size	Square Feet	Package Price w/60% black shade
20' x 20'	400.00	\$2,600
20' x 40'	800	\$4,200
20' x 60'	1,200	\$5,850
Size	Square Feet	Package Price w/60% black shade
40' x 40'	1,600	\$7,000
40' x 60'	2,400	\$9,800
40' x 80'	3,200	\$12,550
Size	Square Feet	Package Price w/60% black shade
60' x 60'	3,600	\$13,700
60' x 80'	4,800	\$17,800
60' x 100'	6,000	\$21,500
Size	Square Feet	Package Price w/60% black shade
100' x 100'	10,000	\$33,900
Size	Square Feet	Package Price w/60% black shade
100' x 200'	20,000	\$64,900

Prices are subject to change. Additional configurations are available. Please call 1-888-334-1440 for a quote.

Price	Description	Price
VX2030-B60	20 x 30 Blue 60%	\$3,500
VX2030-G60	20 x 30 Green 60%	\$3,425
VX2030-K30	20 x 30 Black 30%	\$3,300
VX2030-K40	20 x 30 Black 40%	\$3,310
VX2030-K50	20 x 30 Black 50%	\$3,315
VX2030-K60	20 x 30 Black 60%	\$3,325
VX2030-K70	20 x 30 Black 70%	\$3,360
VX2030-K80	20 x 30 Black 80%	\$3,400
VX2030-K90	20 x 30 Black 90%	\$3,405
Price	Description	Price
VX2040-B60	20 x 40 Blue 60%	\$4,500
VX2040-G60	20 x 40 Green 60%	\$4,400
VX2040-K30	20 x 40 Black 30%	\$4,230
VX2040-K40	20 x 40 Black 40%	\$4,285
VX2040-K50	20 x 40 Black 50%	\$4,245
VX2040-K60	20 x 40 Black 60%	\$4,265
VX2040-K70	20 x 40 Black 70%	\$4,305
VX2040-K80	20 x 40 Black 80%	\$4,360
VX2040-K90	20 x 40 Black 90%	\$4,370

Prices are subject to change. Additional configurations are available. Please call 1-888-334-1440 for a quote.

US GLOBAL RESOURCES
OVER 75 YEARS OF SERVICE TO A GROWING WORLD
TOLL-FREE: 888-334-1440 | PH: 830-755-4768
EMAIL: USGR@USGR.COM | WEBSITE: WWW.USGR.COM